



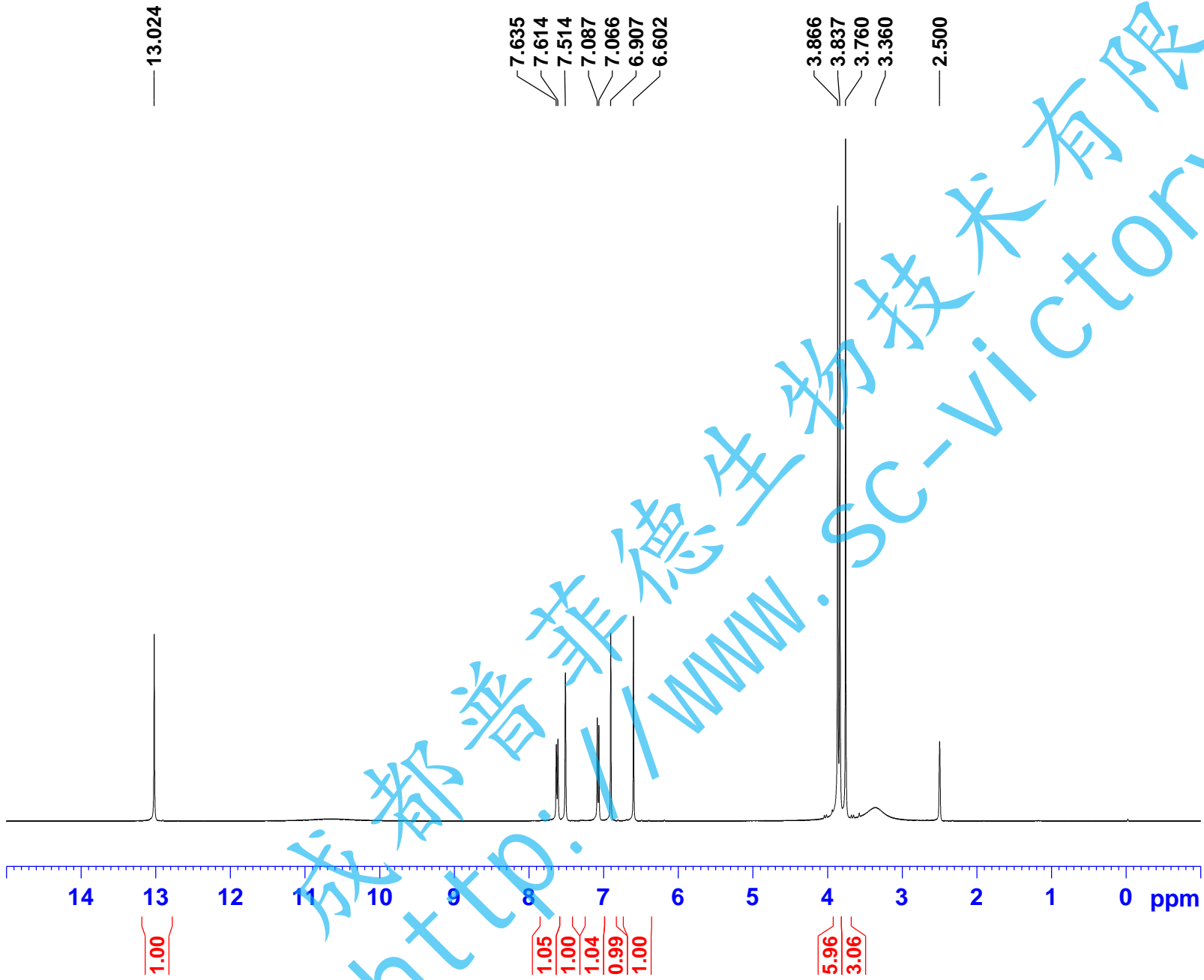
Current Data Parameters  
NAME yizelanhuangsu  
EXPNO 1  
PROCNO 1

F2 - Acquisition Parameters

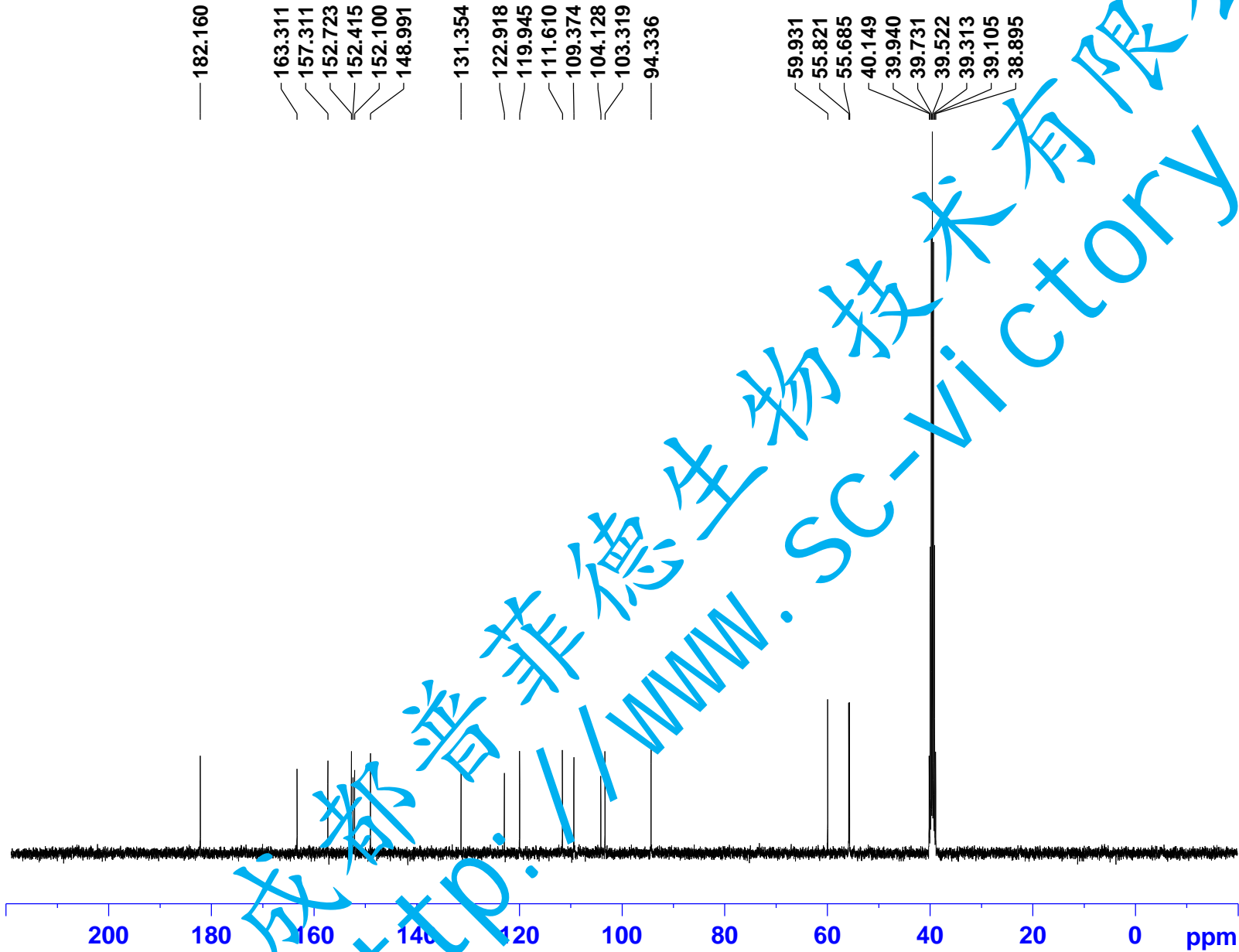
INSTRUM spect  
PROBHD 5 mm PABBO BB-  
PULPROG zg30  
TD 65536  
SOLVENT DMSO  
NS 16  
DS 2  
SWH 8223.685 Hz  
FIDRES 0.125483 Hz  
AQ 3.9846387 sec  
RG 59.05  
DW 60.800 usec  
DE 6.50 usec  
TE 301.5 K  
D1 1.00000000 sec  
TD0 1

==== CHANNEL f1 =====  
NUC1 1H  
P1 9.00 usec  
PLW1 19.00000000 W  
SFO1 400.1324710 MHz

F2 - Processing parameters  
SI 65536  
SF 400.1300032 MHz  
WDW EM  
SSB 0  
LB 0.30 Hz  
GB 0  
PC 1.00



成都普菲德生物技术有限公司  
http://www.sc-victory.com



Current Data Parameters  
 NAME yizelanhuangsu  
 EXPNO 2  
 PROCNO 1

F2 - Acquisition Parameters

INSTRUM spect  
 PROBHD 5 mm PABBO BB-  
 PULPROG zgpg30  
 TD 65536  
 SOLVENT DMSO  
 NS 100  
 DS 4  
 SWH 24038.461 Hz  
 FIDRES 0.366798 Hz  
 AQ 1.3631988 sec  
 RG 194.85  
 DW 20.800 usec  
 DE 6.50 usec  
 TE 301.7 K  
 D1 2.00000000 sec  
 D11 0.03000000 sec  
 TD0 1

==== CHANNEL f1 =====  
 NUC1 13C  
 P1 10.00 usec  
 PLW1 95.00000000 W  
 SFO1 100.6228293 MHz

==== CHANNEL f2 =====  
 CPDPRG2 waltz16  
 NUC2 1H  
 PCPD2 80.00 usec  
 PLW2 19.00000000 W  
 PLW12 0.24047001 W  
 PLW13 0.15390000 W  
 SFO2 400.1316005 MHz

F2 - Processing parameters  
 SI 32768  
 SF 100.6128160 MHz  
 WDW EM  
 SSB 0  
 LB 1.00 Hz  
 GB 0  
 PC 1.40

成都普菲德生物技术有限公司  
 www.sc-victory.com